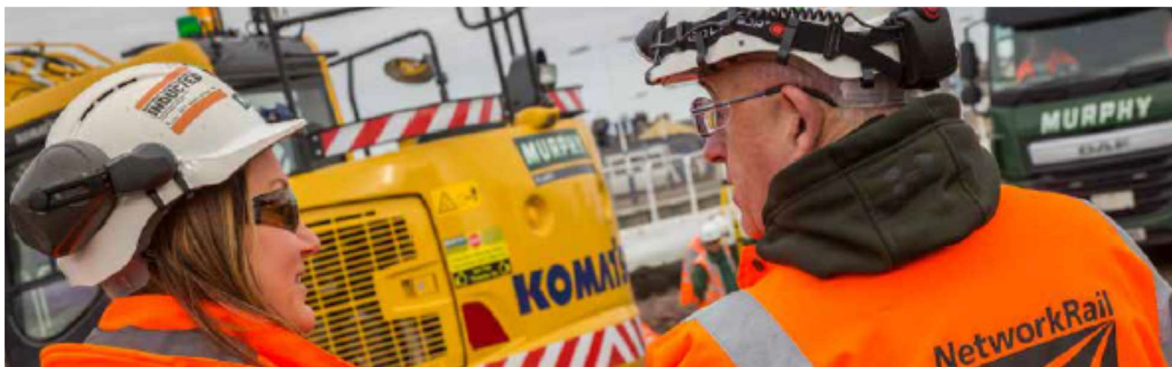


Learn more about how RISQS Audits work

Get independent qualification through an industry recognised scheme



How RISQS Audits Work

When an audit is required there are two ‘stages’ to becoming fully RISQS qualified. First stage is verification of the questionnaire, detailing the products and services each supplier offers., the second is the RISQS audit, which is for those product and service codes deemed to be high risk, or where the location of the service delivery is deemed to be high risk.

The product and service codes used by RISQS are defined by specific activities at their final level in the hierarchy. Further information relating to those activities can be found below or in the Products & Services Guide at www.risqs.org

N-Provide Service	P-Supply	Q-Design	R-Operate	S-Construct/Build	T-Commission
Applicable to owners of plant who hire out their plant. Please note that where you are supplying an operator, and dependent on the type plant, you will also need to hold either the contingent labour code 07.06.07 (plant operators) or 07.06.08 (OTP operators)	Applicable to suppliers/original equipment manufacturers of on-track plant, attachments and associated safety critical equipment	Applicable to suppliers providing outline or detailed design services	Applicable to suppliers engaged in the control and management of on-track plant operations	Applicable to suppliers who undertake building or civil engineering works "on-site"	Applicable to suppliers who undertake commissioning of installations and construction work
U-Dispose	V-Maintain	W-Overhaul	X-Install	Y-Modify	Z-Decommission
Applicable to supplier who undertake the disposal of assets, including materials and parts	Applicable to suppliers offering the service of maintenance and repair of on-track plant to others	Applicable to suppliers offering the service of refurbishment of on-track plant to others	Applicable to suppliers who undertake installation works "on-site"	Applicable to suppliers offering the service of modification, upgrading and retrofitting of buildings, structures, or on-track plant to others	Applicable to suppliers who undertake decommissioning of installations and construction work



Audit Modules

RISQS audits are built around the products and services the supplier offers and is split into five modules. The modules cover the different risk elements imported by a supplier based on the risk that the product or service, or location, poses.

The base module is the CORE; all suppliers undergoing audit must pass this audit module to supply their products and services. If the supplier also works on the operational railway, in the area known as “on or near the line”, they must also pass the Sentinel module. The CDM module is applicable to suppliers selecting auditable codes in conjunction with any of the following activities Construct, Install, Maintain, Commission, Design, Modify and/or Decommission.

There are then two other modules that can be selected, and these are based on the specific services provided by suppliers.

Safe Work Planning (SWP) – the module is applicable to where suppliers that are required to plan for the protection of workers on the operational railway. This is achieved by creating Safe Systems of Work Packs (SSWoP), and these must be planned, to meet a specific standard, by planners qualified to the specific sentinel competence.

On-Track Plant Operations (POS) – the audit module is applicable to all suppliers that wish to hire out or operate their own OTP on the Network Rail infrastructure.

2020 Audit Duration Calculator	Answer			
	Options	Answer	Days	What Yes Means
Has the supplier selected any auditable RICCL discipline area or a Sentinel requirement ?	Yes No	Yes	0.5	Core Module Required
How many RICCL discipline areas does the supplier have auditable codes in (A through to H)	1 to 8	1	0.25	per discipline
Has the supplier selected any auditable codes within the following activity Groups?: Construct, Install, Maintain, Commission, Design, Modify, Decommission	Yes 1 or more No	Yes	0.5	CDM Module Required
Do the supplier's staff or will the supplier's staff need to hold Trackside competencies within Sentinel ?	Yes No	Yes	0.5	Sentinel Module Required
If No, does the supplier need to complete a Non-Trackside Declaration ?	Yes No	Yes		Declaration Only
Does the supplier require both a Safe Work Planning audit AND an On-Track Plant Operations audit?	Yes No	Yes	1	SWP and OTP/POS Module Required
Does the supplier require a Safe Work Planning audit?	Yes No	Yes	0.5	SWP Module Required
Does the supplier require an On-Track Plant or On Track Plant Operations Scheme audit?	Yes No	Yes	0.75	OTP/POS Module Required
Total Audit Duration				<input type="text"/>

Where the final audit duration is calculated as a part day the duration will be rounded to the nearest whole day. The duration will be rounded down where there is 0.25 of a day, and up where there is 0.50 or 0.75 of a day.

Except for the Medical Assessment Module, the audit cost is calculated on a day rate of £945 + VAT.

Medical Assessment Modules are calculated at a day rate of £1,312.50 + VAT.

RICCL

The product and service codes used within RISQS are taken directly from the Rail Industry Commodity Classification List or “RICCL”.

By selecting the codes that reflect their business activities, suppliers make themselves available for selection within buyer searches.

RISQS Audit process

Upon joining RISQS suppliers will be invited to complete Stage 1, the verification questionnaire. Once completed, and only if auditable product and service “RICCL” codes have been selected, the supplier will be invited to complete Stage 2, RISQS audit.

What happens next?

Once the RISQS audit has been completed the suppliers’ status will update within the RISQS portal, after approximately 10 days, for buyers to view.

Suppliers will then have the option to download their audit reports, RISQS audit certificate and RISQS qualified logo.

RISQS audits are valid for 12 months.

T: +44 (0) 0800 4101 300 | E: info@risqs.org | www.risqs.org

Contact RISQS

If you have any questions, please contact us on (0) 800 4101 300 or email info@risqs.org

Join the 4,000 plus suppliers already demonstrating their capabilities to leading buyer organisations.