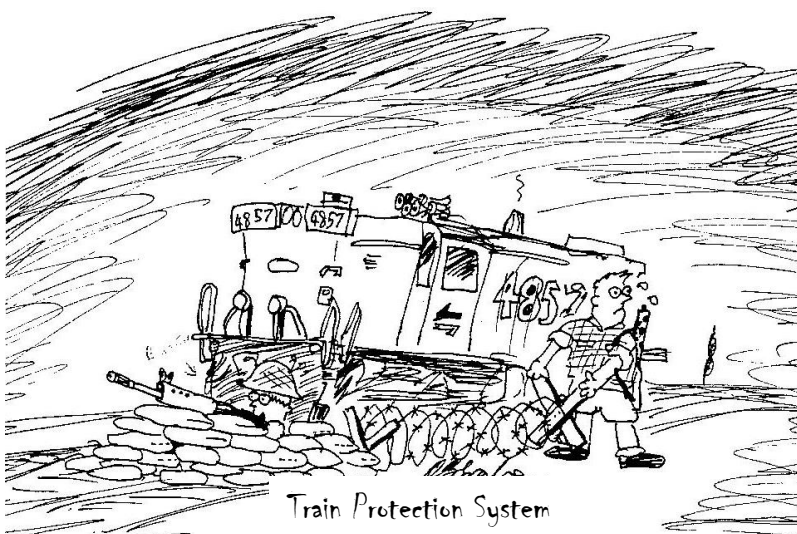


Plain English Guide to RICCL

Learn.....

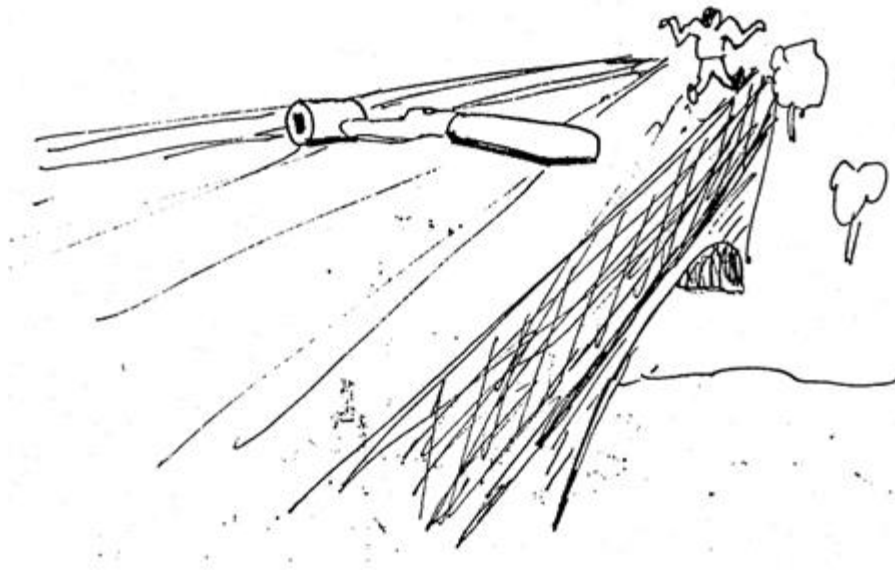
- What RICCL is
- How it is structured
- How to find a commodity
- How to propose a change



Cartoons courtesy of www.Railtoons.site90.com

Contents

What is RICCL?	3
How is it structured?	4
How do I find my commodity?	5
What if my commodity is not yet in RICCL?	5
What information is available?	5
Commodity Information Sheet	6
Appendix - Simplified Explanation of Sub-Systems	8



To test if leak is from the equalising reservoir, place the handle on the bridge

What is RICCL?

RICCL stands for Railway Industry Commodity Classification List. RICCL is a flexible list that contains all of the commodities (equipment, materials and services) that are purchased for the British mainline railway network. RICCL is one of the basic building blocks for the Supplier Assurance Framework (SAF).

The scheme will provide harmonised supplier qualification arrangements that are simpler, more effective and more efficient than those that exist now and which provide a 'one-stop-shop' entry point designed to understand a supplier's capability, through a registration process recognised by all buyers. Supplier assurance refers to the confidence that buyers and suppliers have in each other when working together to manage risk. Part of that confidence results from using a common vocabulary to describe the materials and services that are purchased.

RICCL is part of a comprehensive data hub which will in due course include details of potential suppliers, recommended minimum assurance arrangements and technical information.

What is a...

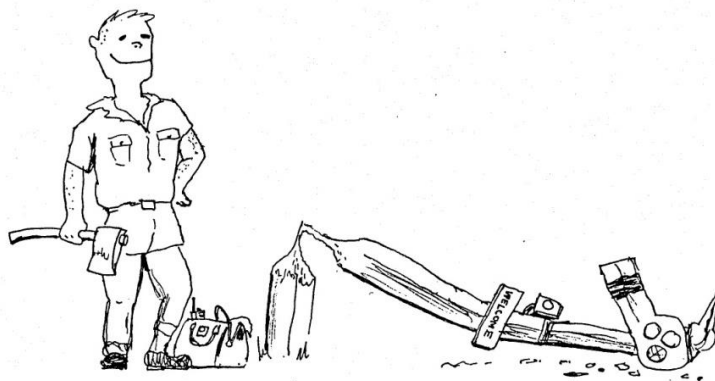
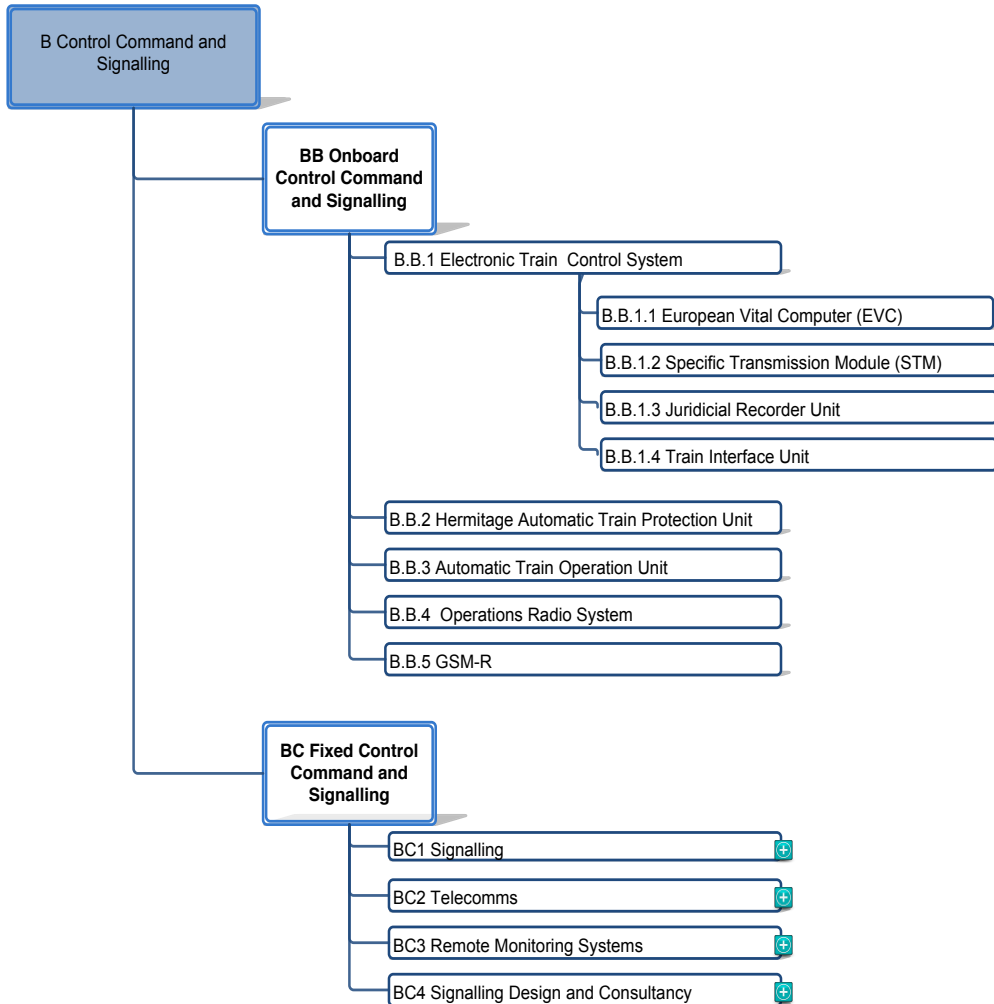
Commodity? – A service or product purchased to support railway operations.

Sub-System? – The logical division of the Railway into the main commodity groups e.g. Infrastructure

How is it structured?

The GB railway industry is split into eight “sub-systems” as shown below. This is consistent throughout the UK and is compatible with Europe.

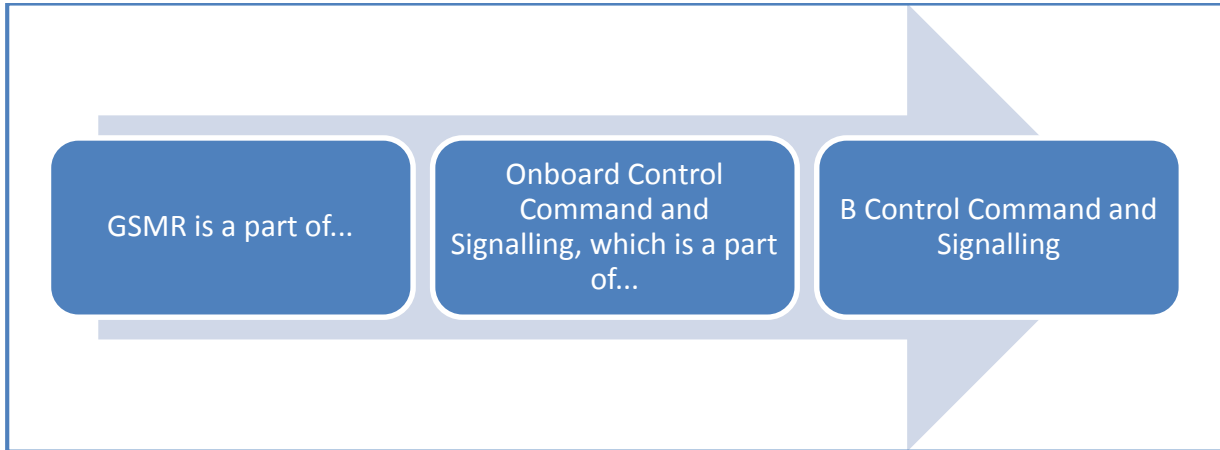
Each sub-system is then broken down further.



Alternative Permissive Working System

How do I find my commodity?

RICCL is based on a series of parent-child relationships. This is an important concept upon which the whole product classification structure hangs. When looking for a commodity within the structure, the questions 'What is this a part of?' or 'What is this made from?' will logically lead to the correct position.



When searching for a commodity within RICCL ask yourself "What is it a part of?"

If the category for a particular item or service appears to be unclear, email riccl@risqs.org for assistance.

What if my commodity is not yet in RICCL?

If the commodity is new or has been overlooked it is easy to propose an additional category. A form is available on the RICCL website <https://www.risqs.org/commodity-list/>

This should be submitted to riccl@risqs.org

After approval the change will be published. The change will then be implemented.

What information is available?

Each composite identification code is being assigned a level of risk and suppliers will be expected to comply with requirements that are appropriate to that risk. For example a company that overhauls bogies might be required to hold a RISAS certificate because the level of risk is high. A company that supplies passenger seats might be required to meet a lower set of requirements, as the risk level is lower. RICCL covers the whole life cycle of a product from design through to demolition, a suffix (N-Z) after the composite identification code shows what aspect of the products life-cycle the supplier is certified to provide. The following is an example of a commodity information sheet, providing the hazard level, minimum assurance requirements and technical information.

Commodity Information Sheet

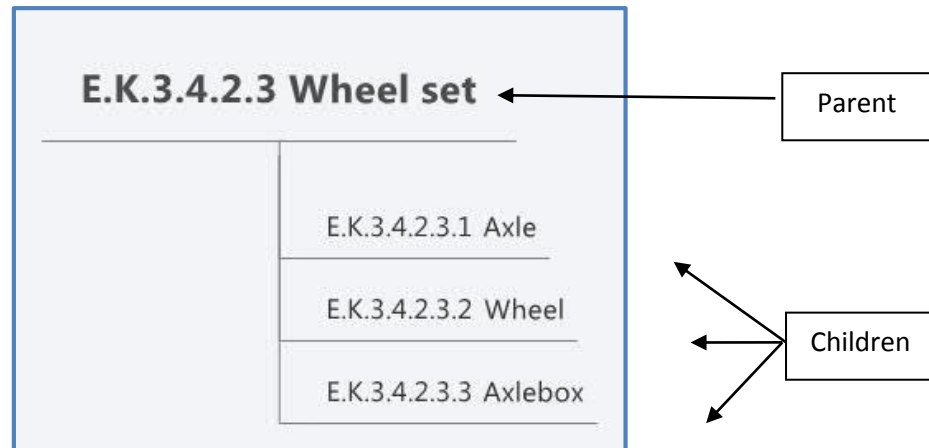
E.K.3.16.4.1.1-WSP Control Unit

THE FOLLOWING IS FOR ILLUSTRATIVE PURPOSES ONLY		
Product: WSP Control Unit	Code: E.K.3.16.4.1.1	Serial No: 02574
Link-up Engage Codes: Link Up3 16.86.06	IRIS Codes: IRIS 7.3.1	RISAS Product Group: M02 D 0205
Relevant Product Cycles	Hazard Level	Requirements
N-Provide Service	N/A	Not Applicable
P-Supply	Level 2	PAS-X 2014– Core Requirements
Q-Design	Level 1	PAS-X 2014 – Important for Safety + Engineering Change
R-Operate	N/A	Not Applicable
S-Manufacture	Level 2	PAS-X 2014– Core Requirements
T-Commission	Level 2	PAS-X 2014– Core Requirements
U-Dispose	Level 2	PAS-X 2014– Core Requirements
V-Maintain	Level 1	PAS-X 2014 – Important for Safety + Technical Assessment*
W-Overhaul	Level 2	PAS-X 2014– Core Requirements
X-Install	Level 1	PAS-X 2014 – Important for Safety + Technical Assessment*
Y-Modify	Level 1	PAS-X 2014 – Important for Safety + Engineering Change
Z-Decommission	N/A	Not Applicable
Notes: Any unique Hazards and requirements to be entered here		

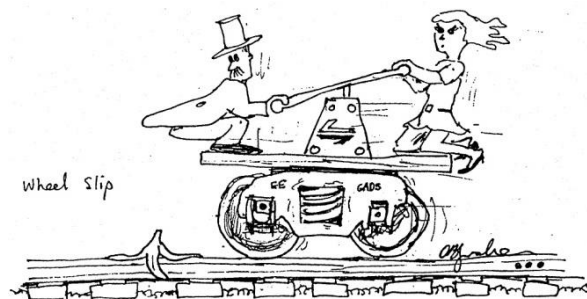
*Legal requirements for "Safety Critical Work" might also apply in accordance with ORR guidelines

Optional Customer Requirements	Environmental Management Systems (ISO 14001) Social Responsibility Requirements (ISO 26000)
--------------------------------	--

If a supplier has been approved for a parent commodity then approval is automatically given for all of the children and subsequent descendants. (This does not work in reverse; approval for all of the children does not automatically confer approval for the parent because there may be special requirements for the assembly of the sub components.)



A supplier who is approved for Wheel Sets is also approved for Axles, Wheels and Axle boxes.



Appendix - Simplified Explanation of Sub-Systems

Sub-System	Name	Simplified Description of Sub-System
A	Transverse Railway Products	This is not a 'miscellaneous' group but is for services and supplies that would fit into two or more of the following categories.
B	Control Command and Signalling (CoCoSig)	Systems and equipment used to control movements of trains on the main line and to ensure safety. This includes radio communications between train and infrastructure, hot axle box detection, etc. Level crossings are also considered part of CoCoSig.
C	Infrastructure	Track, points, engineering structures (bridges, tunnels, etc.), stations (platforms, access ways, buildings, etc.), line side security and environment (managing the risk from vegetation, weather and water), structures used to support signalling, telecommunications, electrification, lighting and other equipment (eg, gantries).
D	Plant	Fixed and mobile plant including fixed equipment (eg lighting), fixed machinery (eg escalators) and power supplies; mobile equipment and machinery used on and off the rails. <i>It does not include rail vehicles that are allowed to be driven on the main line.</i>
E	Rail Vehicles	Diesel and electric locomotives, passenger carriages, multiple units and high speed trains (including non passenger trains). <i>Some parts of the rail vehicle (eg cab radio, pantograph) are considered part of the associated system (ie CoCoSig and energy)</i>
F	Energy	Electrification system, overhead lines, third rail and current collectors. <i>This does not include electricity supplies for buildings or the signalling system.</i>
G	Operations and Traffic Management	Procedures and equipment enabling operation of the railway system. This includes train driving, traffic planning and management, timetables, ticketing etc. Management and investigation of accidents, incidents and emergencies is also included.
H	General Business Supplies & Services	Services and supplies that are not specific to the operation of the railway. (e.g. stationery, graffiti removal, etc.)